

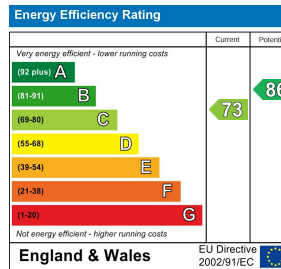
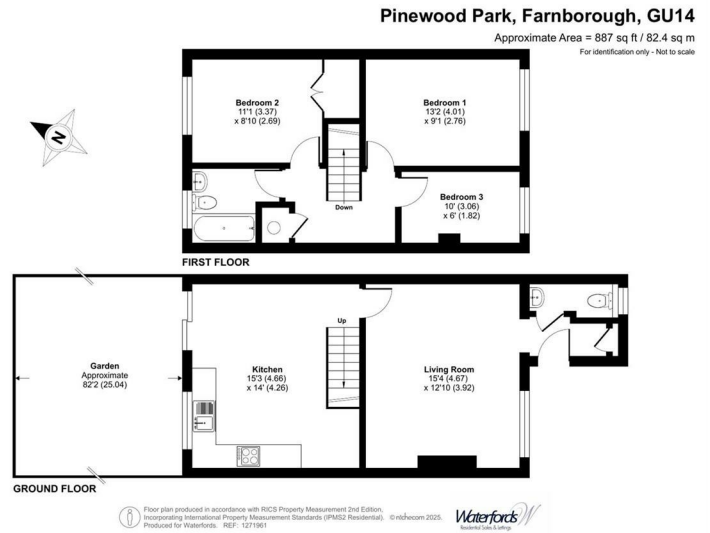


Pinewood Park | | Farnborough | GU14 9LH

£1,750 Per Month

*Waterfords* W  
Residential Sales & Lettings





## Description

A beautifully refurbished three-bedroom terraced home located in the sought-after Pinewood Park area of Farnborough. This stunning property has been completely updated throughout, featuring a brand-new kitchen and bathroom, fresh flooring, and modern redecoration. The spacious interior is complemented by a large, enclosed rear garden, perfect for outdoor living, with the added bonus of scenic views over the tranquil Hawley Lake situated directly behind the property. Ideal for families or professionals seeking a stylish, move-in ready home in a peaceful setting.

## Key features

- Fully Refurbished throughout
- Fresh Flooring And Redecoration
- Spacious Living/Dining Areas
- Stunning Views Of Hawley Lake
- EPC C
- Brand-New Kitchen And Bathroom
- Three Well-Sized Bedrooms
- Large Enclosed Rear Garden
- Minimum 12 Month Let
- Council Tax Band C



35 Plough Road  
Hampshire  
GU46 7UW  
01276 903006  
surreylettings@waterfords.co.uk  
<https://www.waterfords.co.uk/>